



Waveguide Switch Series-WR430

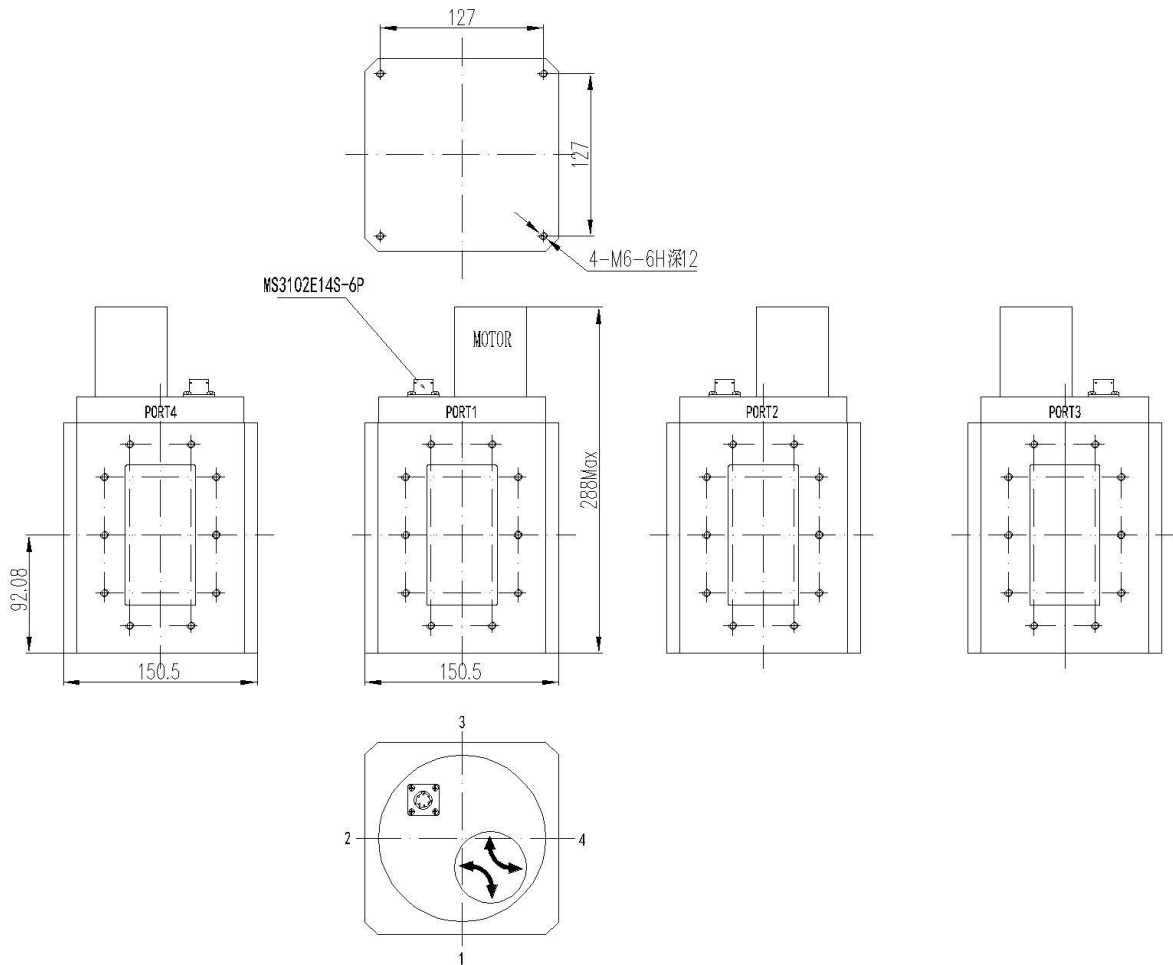
Electrical Specifications:

Parameter	Minimum	Typical	Maximum
Frequency	1.7GHz		2.6GHz
Insertion Loss			0.1dB
Isolation	80dB		
VSWR			1.1:1
Voltage		+27 VDC \pm 10%	
Current			2.5A
Switching Type:		DPDT	
Switching Time:			500mS
Operating Temp	-40°C		+85°C
Storage Temp	-50°C		+80°C

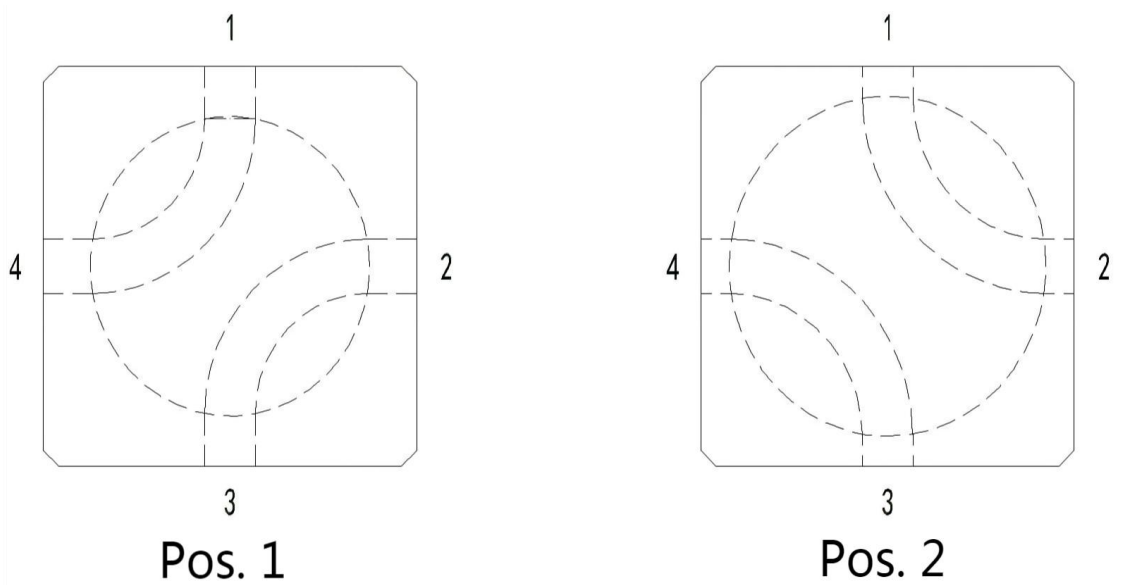
Mechanical Specifications:

Item	Specification
Flange:	FDM22
Connector:	MS3102E14S-6P
Application:	salt-spray environment

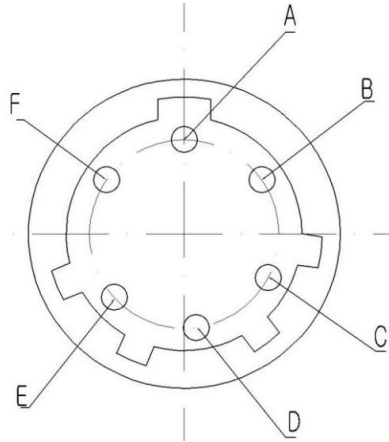
Outline: (All dimensions are in millimeters)



R.F. PATHS:



Pin Definition:



Connector Instruction:

Table 1 Connector Instruction

Pin	A	B	C	D	E	F
-	Power +27V	Earthing	Power +27V	Connected to micro switch	Micro switch ground	Connected to micro switch

Table 2 Connector Signal Definition

Pin	Signal Definition	Note
A	Power +27V	When C inputs +27V, duration 500ms±20ms, the switch state is in Pos.1 (PORT1-PORT4 breakover, PORT2-PORT3 breakover).
B	Earthing	
C	Power +27V	When C inputs +27V, duration 500ms±20ms, the switch state is in Pos.2 (PORT1-PORT2 breakover, PORT3-PORT4 breakover).
D	Connected to micro switch	When switch state is in Pos.1, Pin D - Pin E breakover.
E	Micro switch ground	Earthing is suggested
F	Connected to micro switch	When switch state is in Pos.2, Pin E - Pin F breakover.